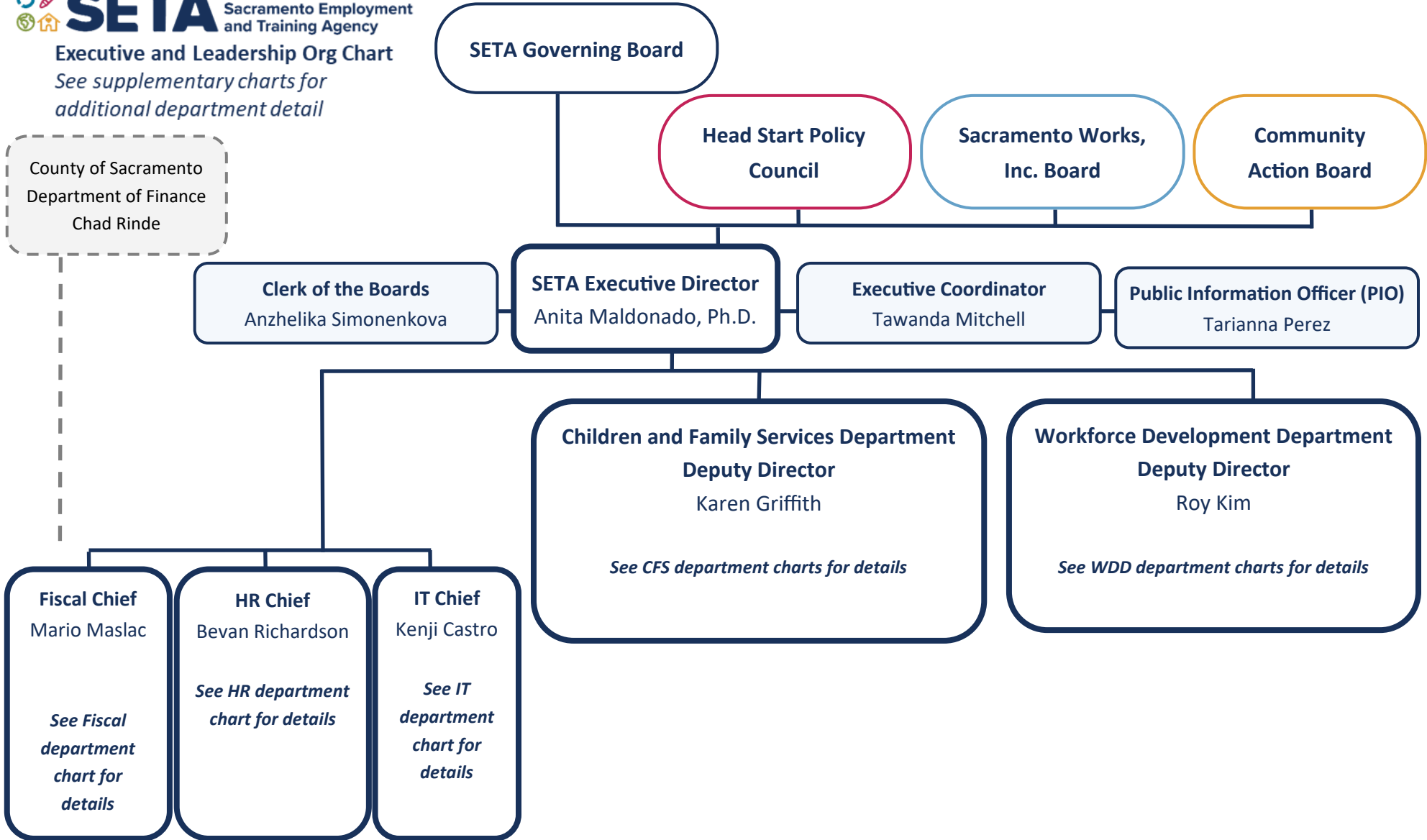


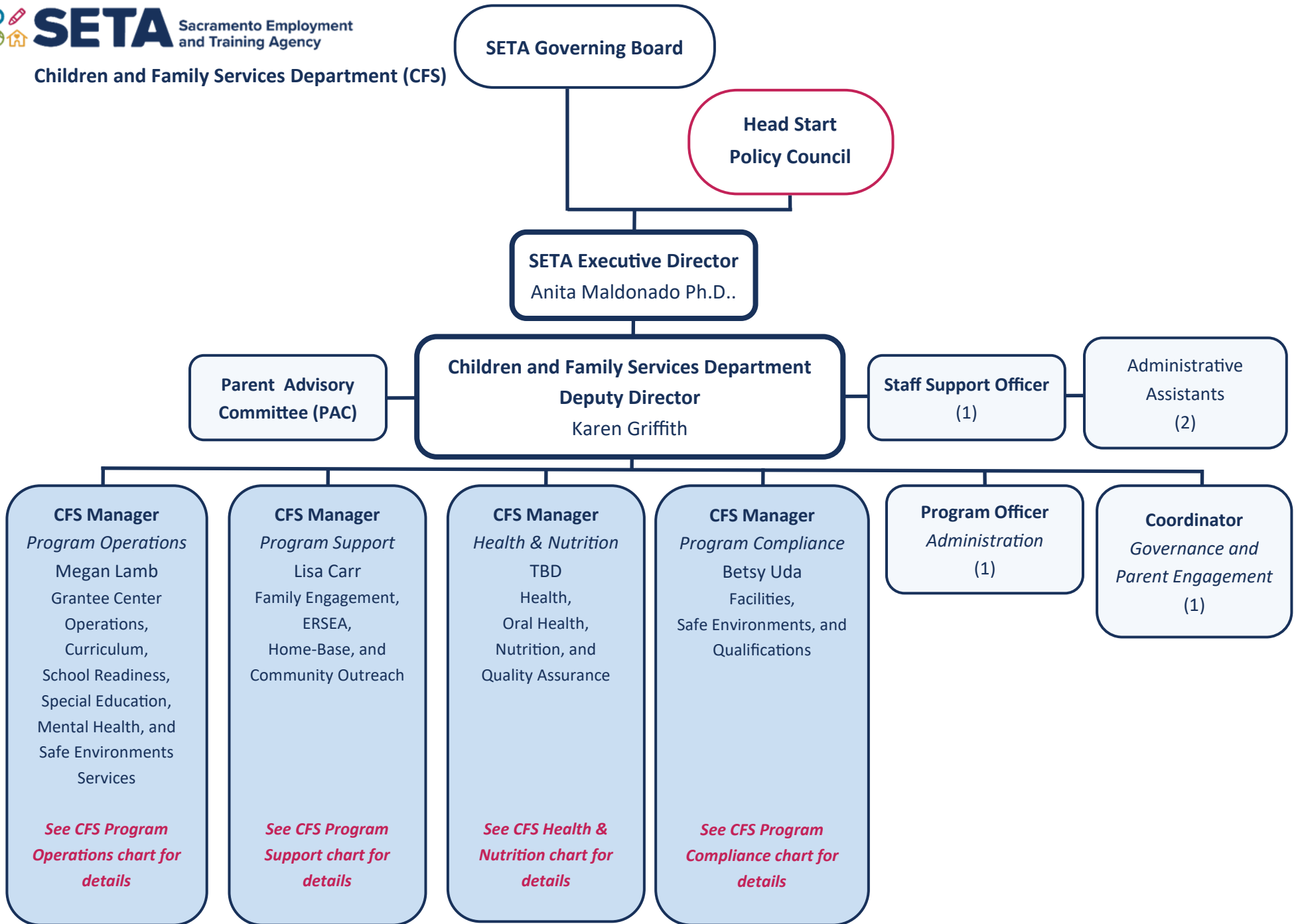
Executive and Leadership Org Chart

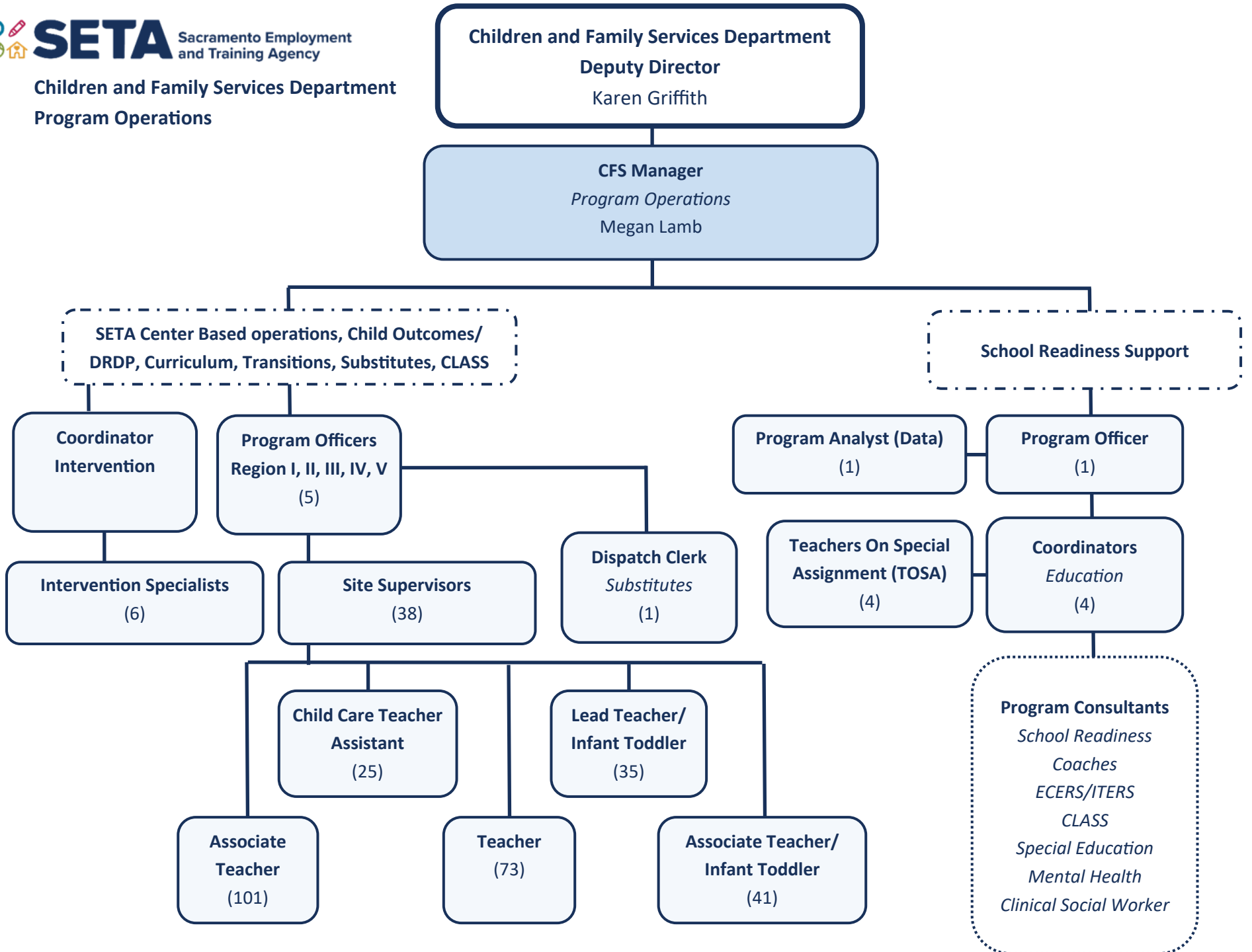
See supplementary charts for additional department detail

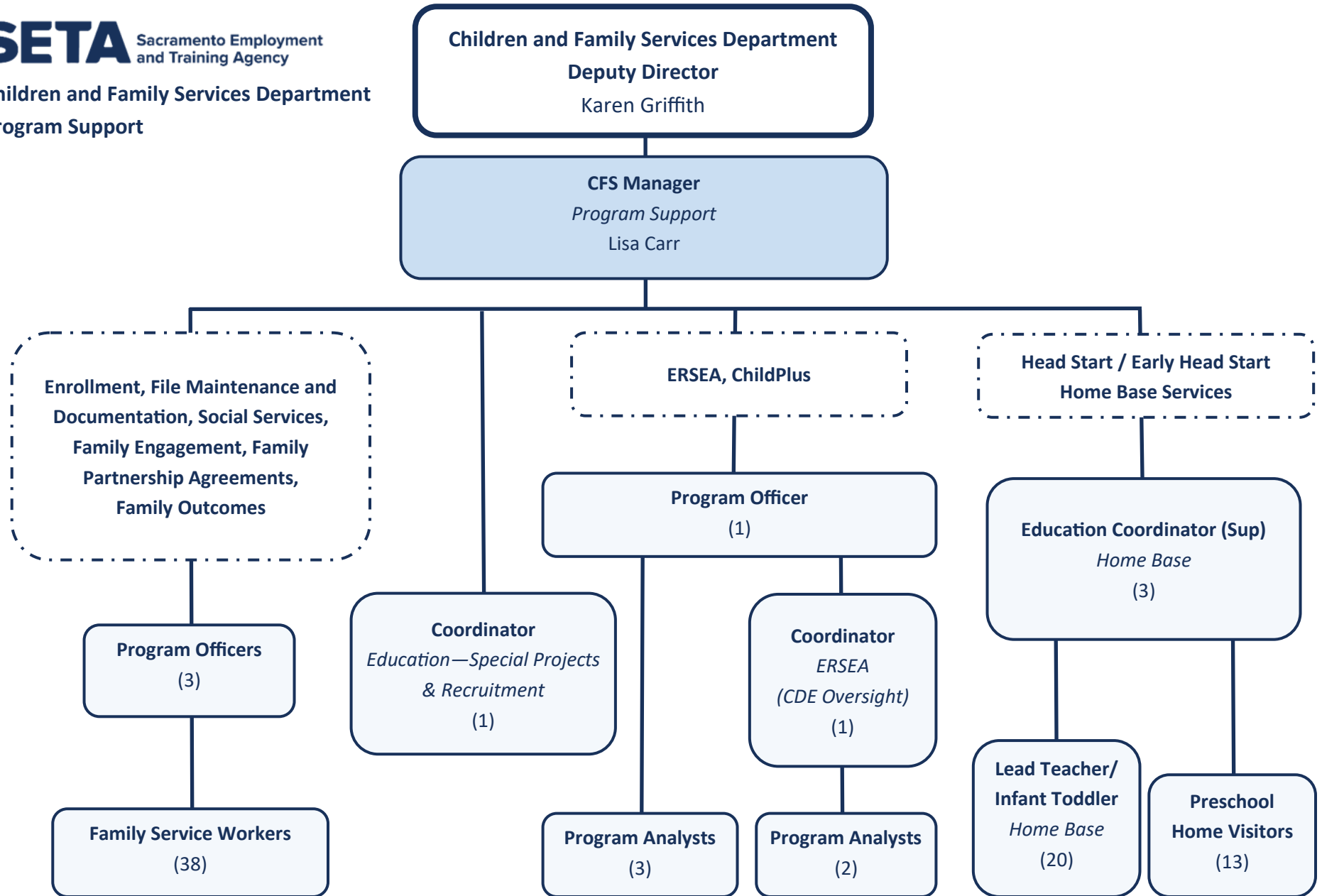
County of Sacramento
Department of Finance
Chad Rinde

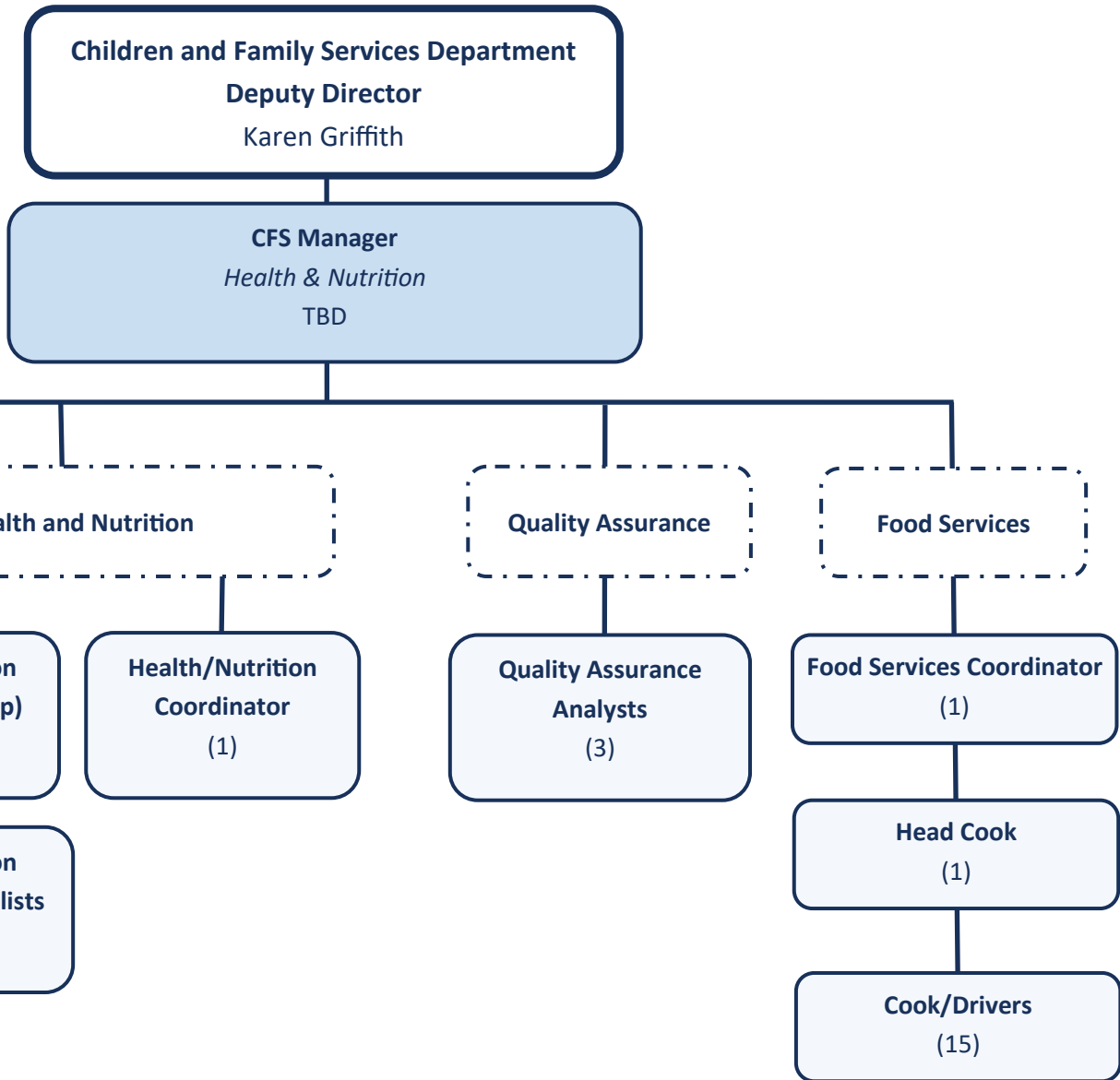


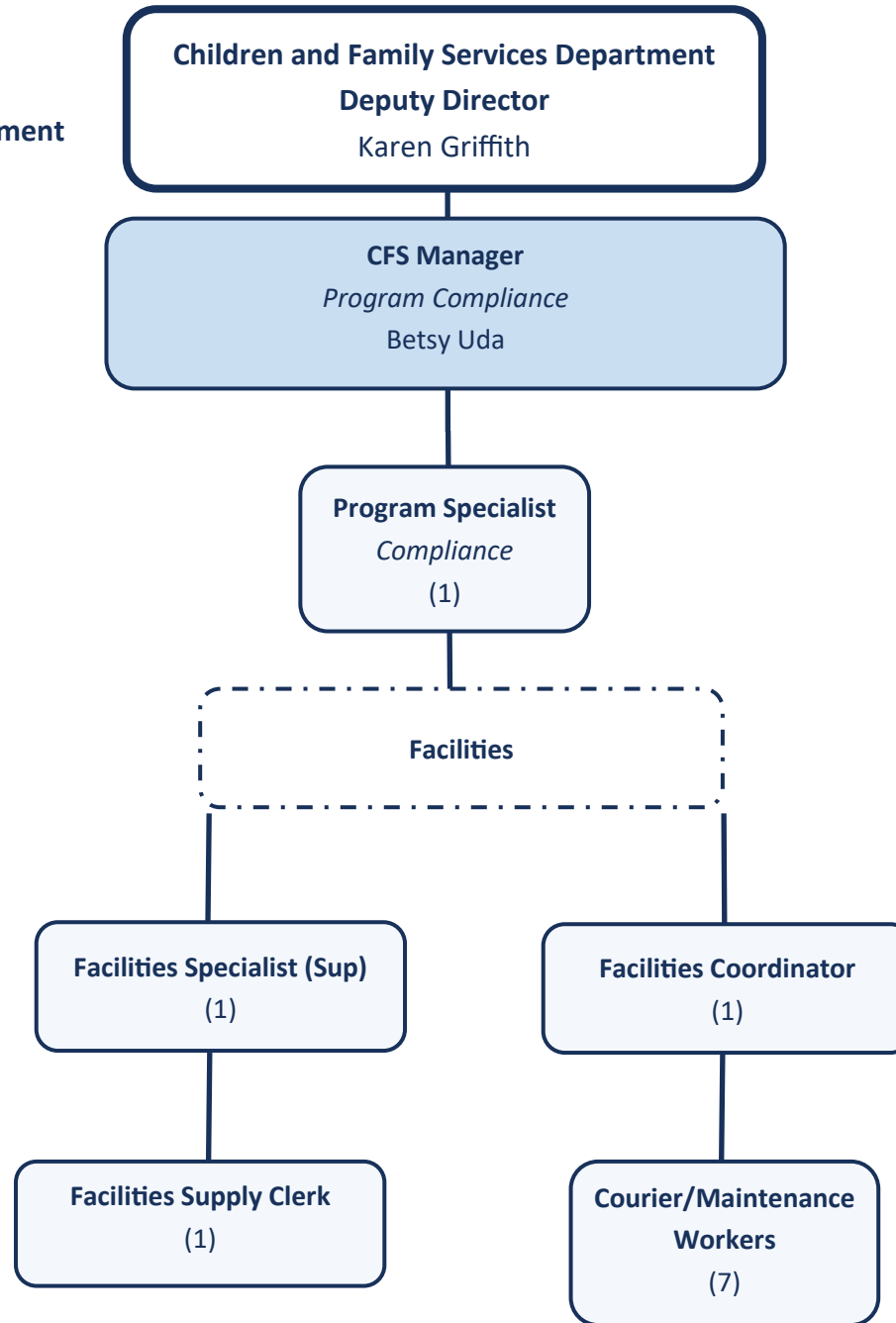
Children and Family Services Department (CFS)











Workforce Development Department (WDD)

SETA Governing Board

Sacramento Works, Inc. Board

Community Action Board

SETA Executive Director
Anita Maldonado Ph.D.

Workforce Development Department Deputy Director
Roy Kim

Workforce System Administrator
(1)

Workforce Development Planner I
(1)

Workforce Development Analyst III
(1)

Workforce Development Manager
Business
William Walker
Rapid Response,
Layoff Aversion,
Employer Outreach,
Job Fair Coordination,
Business Services,
City of Sacramento Partnerships

See WDD Employer Services chart for details

Workforce Development Manager
AJCC
Julie Davis-Jaffe
Job Centers,
CSBG,
Industry Sector Initiatives,
CART

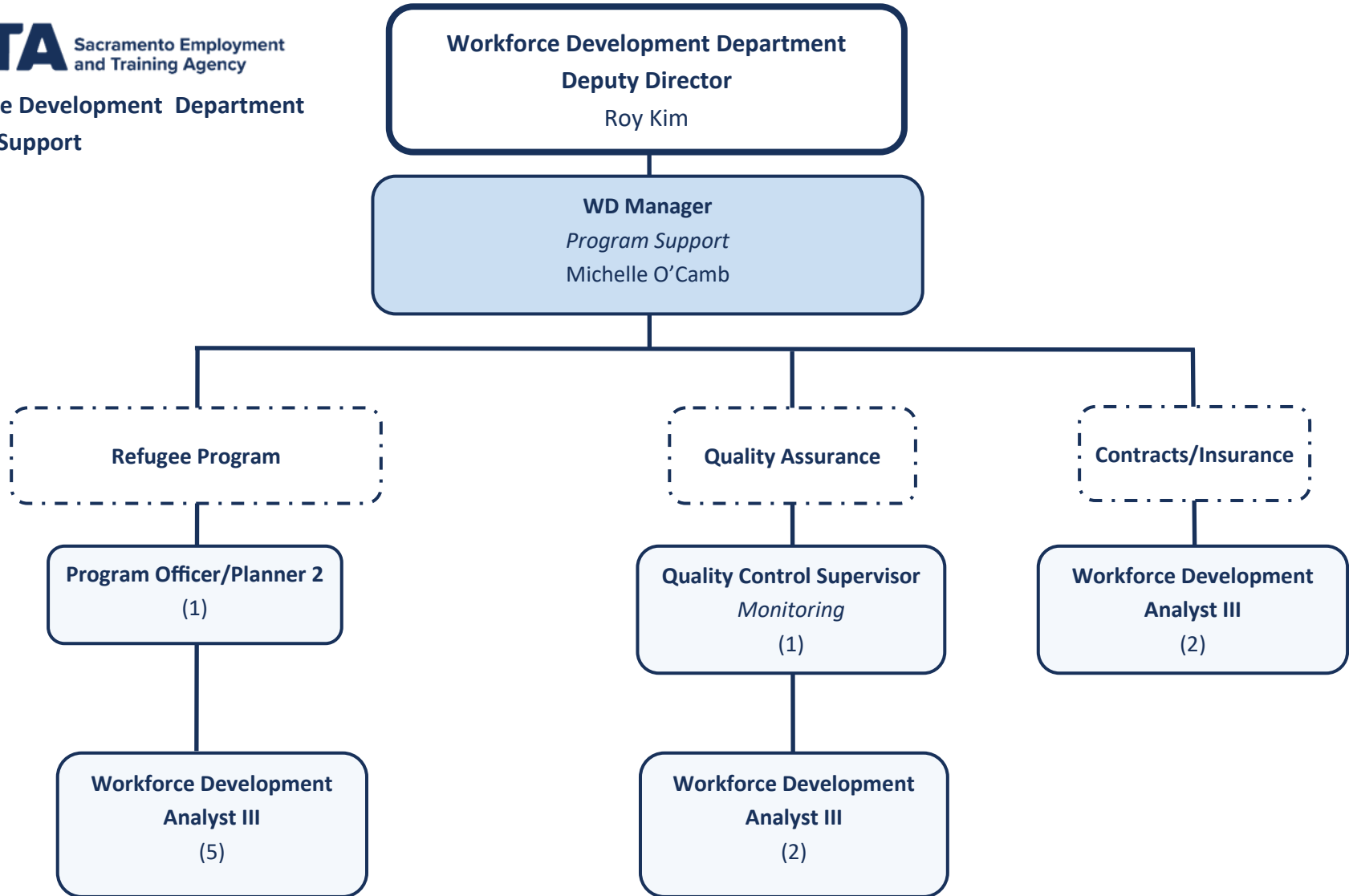
See WDD AJCC chart for details

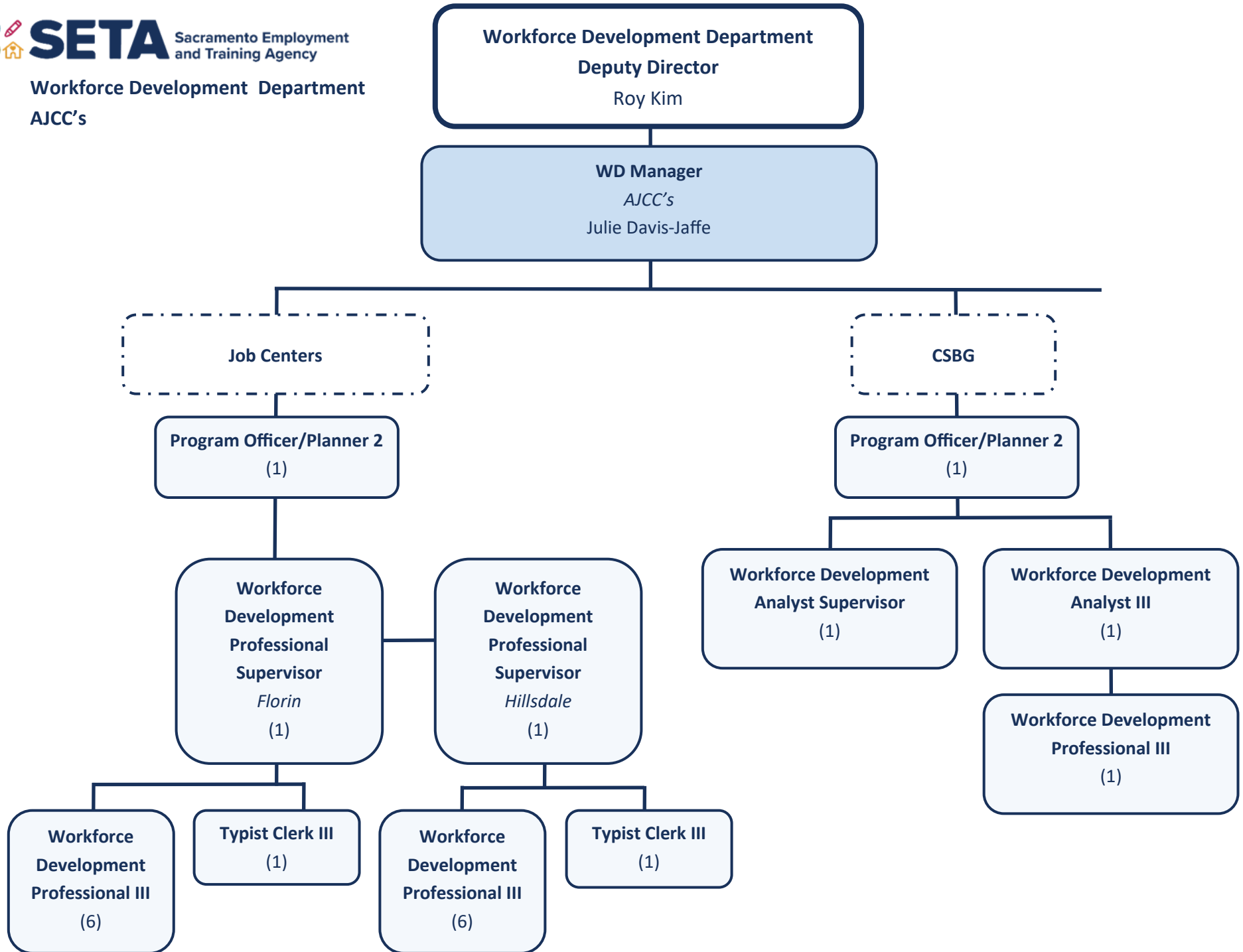
Workforce Development Manager
Youth
Lauren Mechals
WIOA Youth,
Discretionary Youth Programs,
In-house OJT/SE Program & WEX,
Industry Sector Initiatives,
City of Sacramento Partnerships

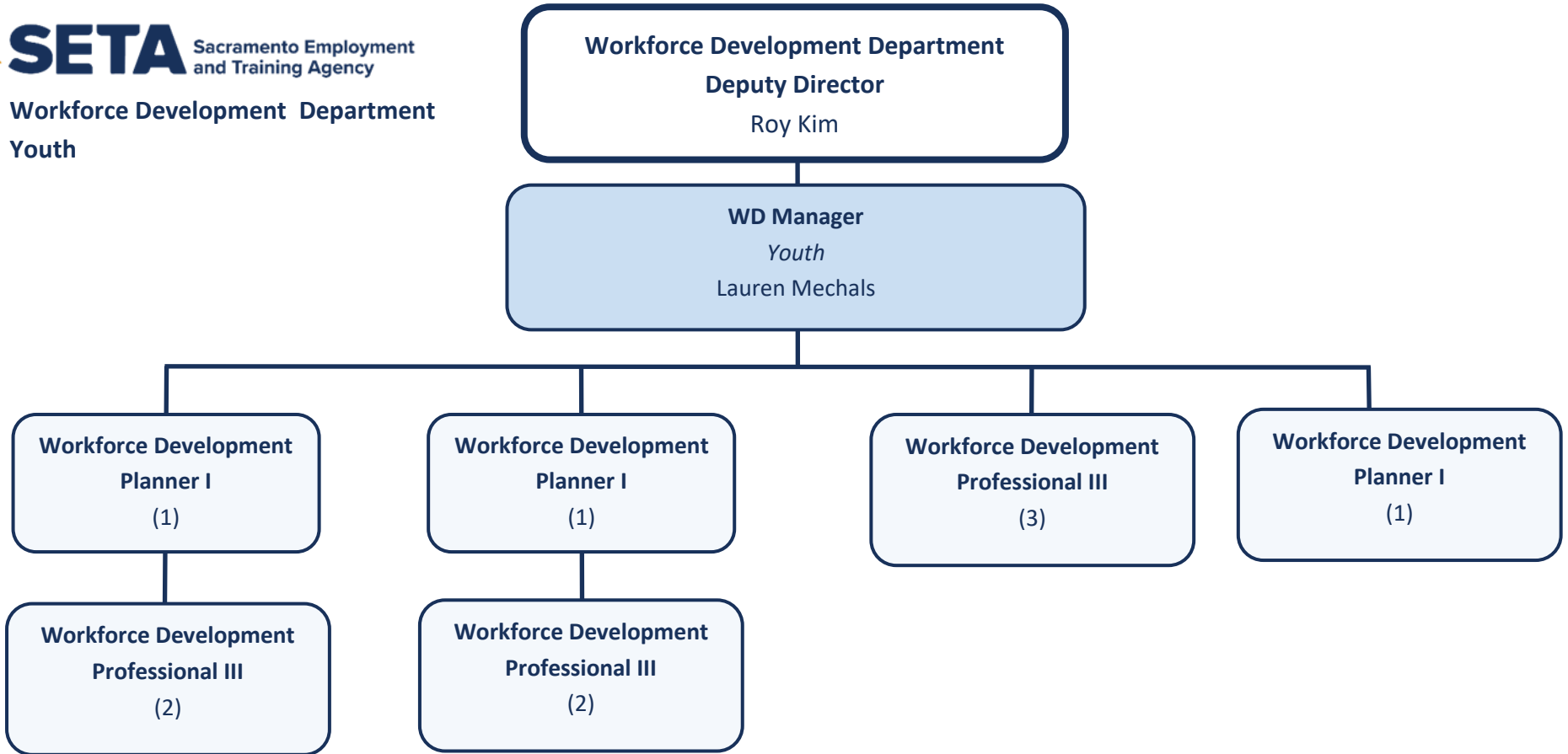
See WDD Youth chart for details

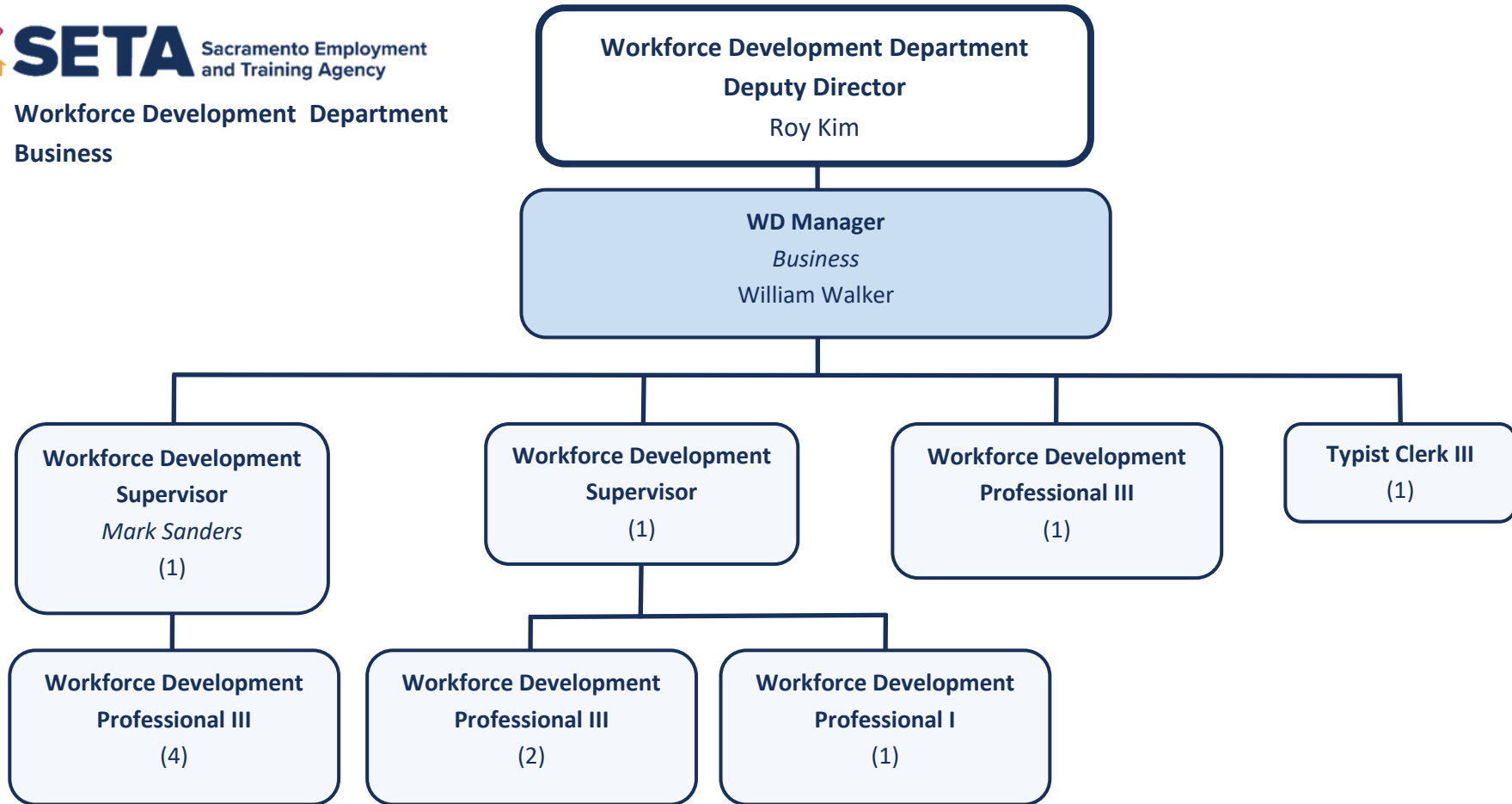
Workforce Development Manager
Program Support
Michelle O’Camb
Refugee Services,
Performance Monitoring,
Quality Control,
Contracts/Insurance,
ETPL/LTPL,
Vendor Services,
ITA Database

See WDD Program Support chart for details

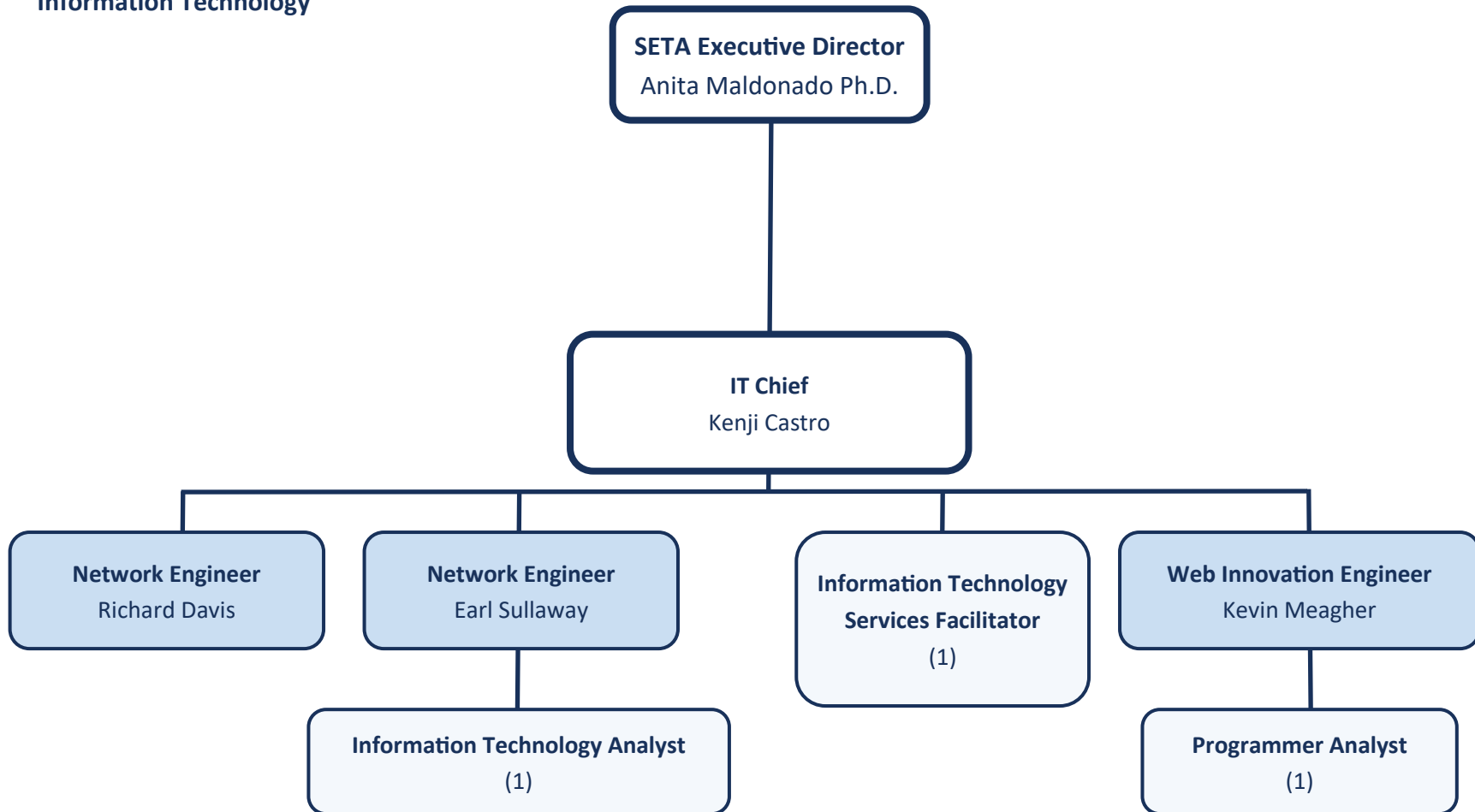








Administrative Services Department
Information Technology



**Administrative Services Department
Fiscal**

County of Sacramento
Department of Finance
Chad Rinde

SETA Executive Director
Anita Maldonado Ph.D.

Fiscal Chief
Mario Maslac

Fiscal Manager
Karen Mora

Fiscal Manager
Victor Han

Accountant II
Fiscal Monitors
(2)

Accountant II (Sup)
Accounts Payable
(1)

Accountant I
(3)

Accountant II (Sup)
Payroll
(1)

Sr. Payroll Specialist
(1)

Payroll Specialist
(1)

Purchasing Analyst (Sup)
(1)

Accountant I
(2)

Accountant I
(1)

